



**Portable
and Easy
To Use!!**

TELE-VIEW® TV-500 EQUINE EXERCISE ENDOSCOPE™

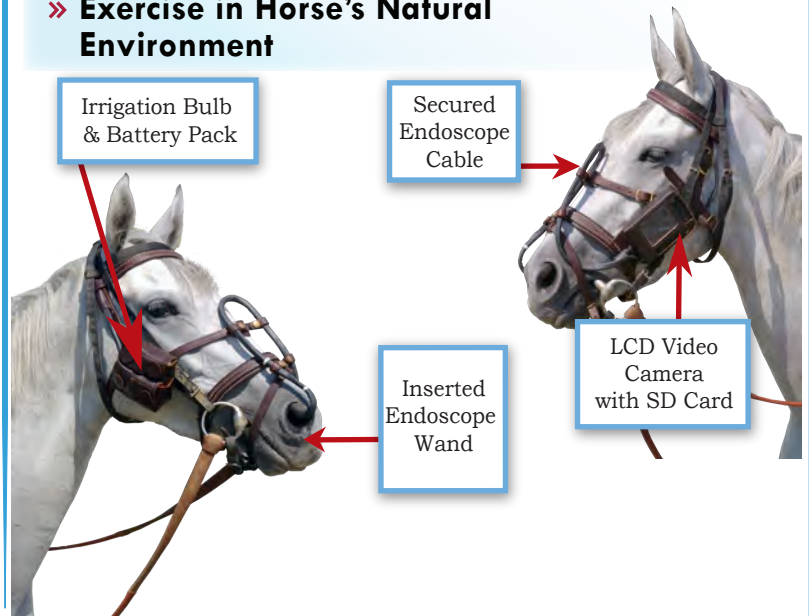


Features

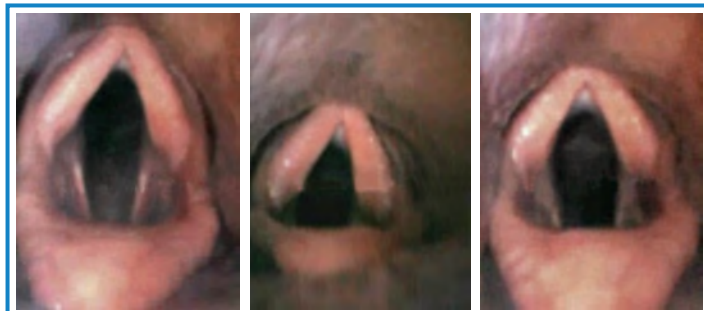
- » Custom-Built Harness & Endoscope Cable
- » Lightweight, Harness-Mounted System
- » System Is Rider Independent
- » Record & Transfer Video to Computer Via SD Card

Benefits

- » Diagnose Airway Restriction Problems During Normal Workouts
- » Use Your Standard Training Equipment
- » Exercise in Horse's Natural Environment



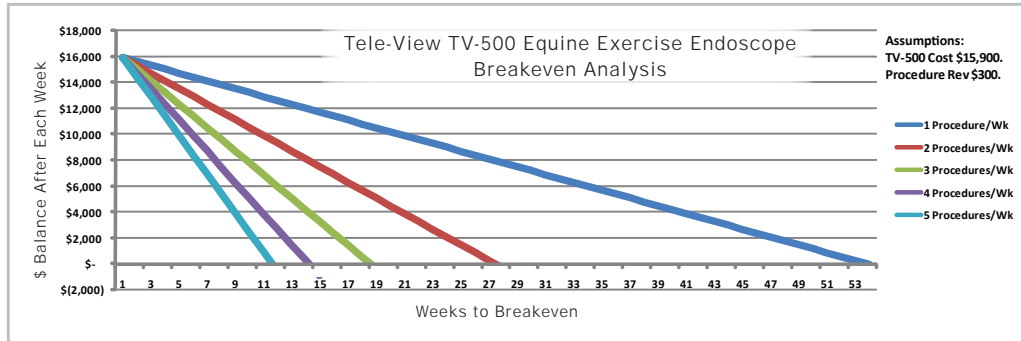
The Tele-View Equine Exercise Endoscope is an easy-to-use method of analyzing airway restriction problems in the upper respiratory tract during exercise. The Endoscope system is lightweight and halter-mounted and can be quickly moved from one horse to the next. The Endoscope cable is placed into the horse's nasal cavity with the camera tip positioned above the larynx. This placement gives an excellent view of the epiglottis and larynx, both, at rest and during workouts. The exercise video is then recorded to the SD card, which can then be easily transferred to the included computer.



Actual Snapshots From Video



TELE-VIEW® TV-500
EQUINE EXERCISE ENDOSCOPE



Included Components



Equine Exercise Endoscope



Irrigation System Pouch



Digital Recorder Pouch



Irrigation System



Equine Endoscope Case with Netbook Computer

Exercise Endoscope Specifications:

- Harness Weight:** 4 lbs (1.8 KG)
- Endoscope Cable Width:** 9/16"
- Endoscope Cable Length:** 42" (106 cm), Custom Lengths Available
- Light Source:** High Intensity White LED's
- Batteries:** Rechargeable NiMH 6V
- Power Supply:** AC 110v or 220v (please request)
- Working Temperature:** 32°-140°F (0°-60°C)
- Video Screen:** 3.5" High Resolution TFT
- SD Card:** 2 GB
- Connections:** Mini-USB
Video Out
5 Volt AC In
SD Card Port
- Functions:** Real-Time Imaging
Record
Snapshot
- Video Output Format:** NTSC/PAL
- Batteries:** Rechargeable Li-Polymer 3.7V
- Power Supply:** AC 100-240V

" The Equine Exercise Endoscope is very easy to use and provides excellent diagnostic information. This, combined with the low cost of ownership and amazing technical support gives clinicians a lot for their money."

- Dr. Keith Taraba, Taraba Equine Services, Santa Anita, CA

