



VET-TEMP® VT-150 INSTANT EAR THERMOMETER

Features:

- » One-Second Measurement
- » Ear Drum is 'Core' Body Temperature
- » Tapered Probe Design Will Not Injure Ear
- » Auto-Off with Memory Function
- » Great for Dogs, Cats, Puppies, Kittens, and Exotics

Benefits:

- » Fast, Easy and Convenient
- » Clinically Proven Accurate
- » 'Core' Body Temperature Measurement
- » Preferred by Patients, Clients and Technicians
- » Eliminates Fecal Cross Contamination

*VT-150 works with Disposable Probe Covers (DPC-500)

**2 for 1
Special
Call For Details**

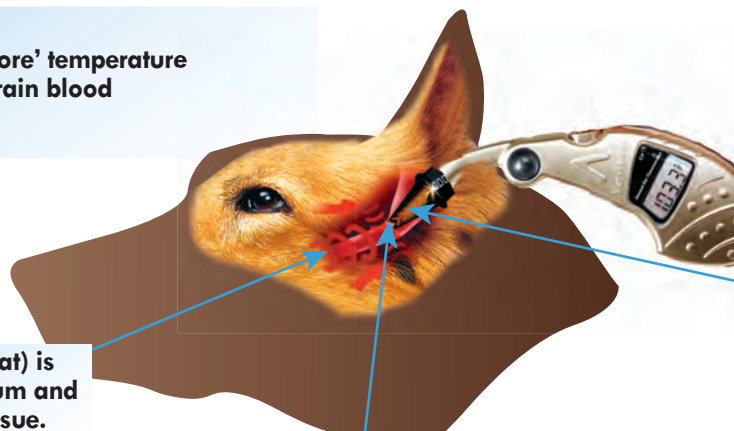


“ Our results revealed that the animal ear thermometer yields an accurate assessment of body temperature, which is of importance to practitioners, because they are offered a method of measurement that is not only reliable but also convenient to use and well accepted by dogs and their owners. ”

JAVMA, Vol 221, No. 3, August 1, 2002

How It Works:

The ear drum region is a 'core' temperature due to the fact that it is a brain blood measurement site.



Infrared energy (heat) is emitted by the ear drum and the surrounding tissue.

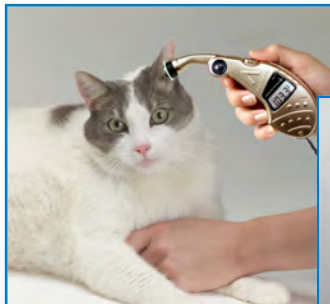
Heat waves enter the optical window of the Vet-Temp probe and are reflected back to the sensor via a special gold plated wave guide.

The patented sensor measures the intensity of the infrared energy and instantaneously converts this measured heat into a digital signal. The microprocessor, using a sophisticated algorithm, calculates and displays temperature in one second.

VET-TEMP® VT-150
EAR THERMOMETER

Ear Thermometer Specifications:

Patient Temperature Range:	93.2°F (34.0°C)-109.4°F (43.0°C)
Operating Ambient Range:	50°F (10.0°C)-104°F (40.0°C)
Accuracy (max error):	
Room Temp (59°-86°F) (15°-30°C):	±0.3°F (±0.2°C)
Room Temp (<59° & >86°F):	±0.5°F (±0.3°C)
Resolution:	0.1°
Measurement Time:	less than 1 second
Automatic Power-Off:	60 seconds
Battery Life with Normal Operation:	approx. 5 years
Weight:	2.8 oz
Dimensions (Closed):	5.3" x 2.6" x 1.1" (13.5 x 6.6 x 2.8 mm)
Probe Covers	Disposable
Memory Function	One Previous Temperature



Included Components



VT-150
Ear Thermometer



25 Disposable Covers
& Dispenser

Works With



Disposable Probe Covers
(DPC-500)
come in boxes of 500

“ Even though I was skeptical at first, I have found the Vet-Temp Ear Thermometer to be an excellent tool for quick, easy and accurate temperature measurement. As soon as the patient arrives into the waiting room, we measure an ear temperature and take their weight. By measuring the temperature right away, we prevent false-positive high temperature readings that can occur when a stressed patient waits for the exam. Also, the Vet-Temp measurement allows for the quick assessment of summertime hyperthermia facilitating immediate cooling if needed. The Vet-Temp Ear Thermometer has been a great addition to my practice. ”

Tim Lesch, DVM - Hoof & Paw Animal Hospital, Belleville, IL